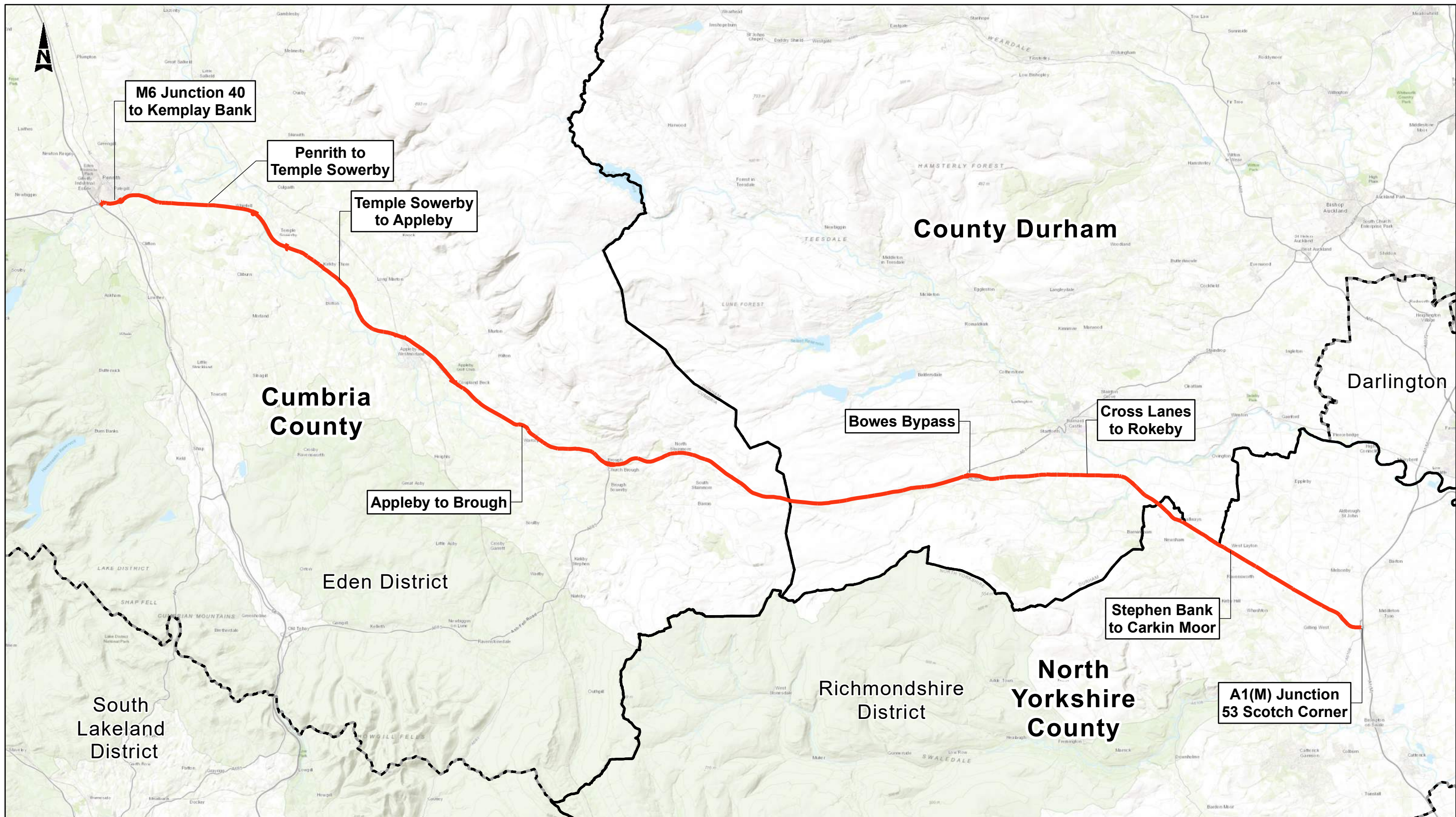


## A66 Northern Trans-Pennine

### Figures - 01. Introduction





**Legend**

- A66 (M6 Junction 40 - A1(M) Junction 53 Scotch Corner)
- District Borough Council Boundaries
- County Boundaries



|                 |                    |                |                 |                 |                   |
|-----------------|--------------------|----------------|-----------------|-----------------|-------------------|
| <b>P02</b>      | <b>First Issue</b> |                |                 |                 |                   |
|                 | PKEL               | MMAT           | LHAN            | AMIT            | KWAH              |
|                 | 14/07/21           | 14/07/21       | 14/07/21        | 14/07/21        | 14/07/21          |
| <b>Revision</b> | <b>Created</b>     | <b>Checked</b> | <b>Reviewed</b> | <b>Approved</b> | <b>Authorised</b> |

Scale @ A3: 1:200,000 | Project Ref No HE565627 | Stage: Stage

© Crown copyright and database right (2021). All rights reserved. OS 100030649  
Service Layer Credits: Sources: Esri, HERE, Garmin, Intermap, increment P Corp., GEBCO, USGS, FAO, NPS, NRCAN, GeoBase, IGN, Kadaster NL, Ordnance Survey, Esri Japan, METI, Esri China (Hong Kong), (c) OpenStreetMap contributors, and the GIS User Community

|   |  |                          |   |
|---|--|--------------------------|---|
| <b>Project Name</b><br>A66 Northern Trans-Pennine   |  |                          |   |
| <b>Map Title</b><br>Figure 1.1<br>A66 Location and Overview Plan<br>Sheet 1 of 1<br>M6 J40 to A1(M) J53 Scotch Corner |  |                          |   |
| <b>Map Number</b><br>Project<br>HE565627  | <b>Originator</b><br>- AMY -                             | <b>Volume</b><br>- EGN - | <b>Location</b><br>S00 - MP - LX - 001000 |
| <b>Suitability</b><br>S4  | <b>Suitability Description</b><br>FIT FOR STAGE APPROVAL | <b>Type</b><br>MP        | <b>Role</b><br>LX                         |
| <b>Revision</b><br>P02  |  |                          |   |